


LDD-14pin-2A-GS Picosecond Laser Diode Driver	
	Features: <ul style="list-style-type: none"> • Current range up to 2A • 60 ps optical pulse duration (DFB laser) • On-board TEC controller • USB, RS-232, CAN, UART interfaces • LabView compatible
	Application: <ul style="list-style-type: none"> • Fiber Laser seeding • LIDAR in automotive • Laser driver for RnD labs
Specification	DATE: 02 February 2023

SPECIFICATIONS					
Parameters	Symb.	Min.	Typ.	Max.	Unit
Pulse current amplitude	I_{amp}	0		2	A
Compliance voltage	V_c			3	V
Pulse repetition rate	F	single shot		30	MHz
Pulse width (FWHM)*	τ	40		150	ps
Trigger in (50 Ohm impedance)	V_{in}	3.3		5	V
Chip temperature	T_{op}	15	25	45	°C
Consumption power (Voltage)	V	4.8	5	5.2	V
Consumption power (Current)	I			1	A
Dimensions	60x85x21				mm

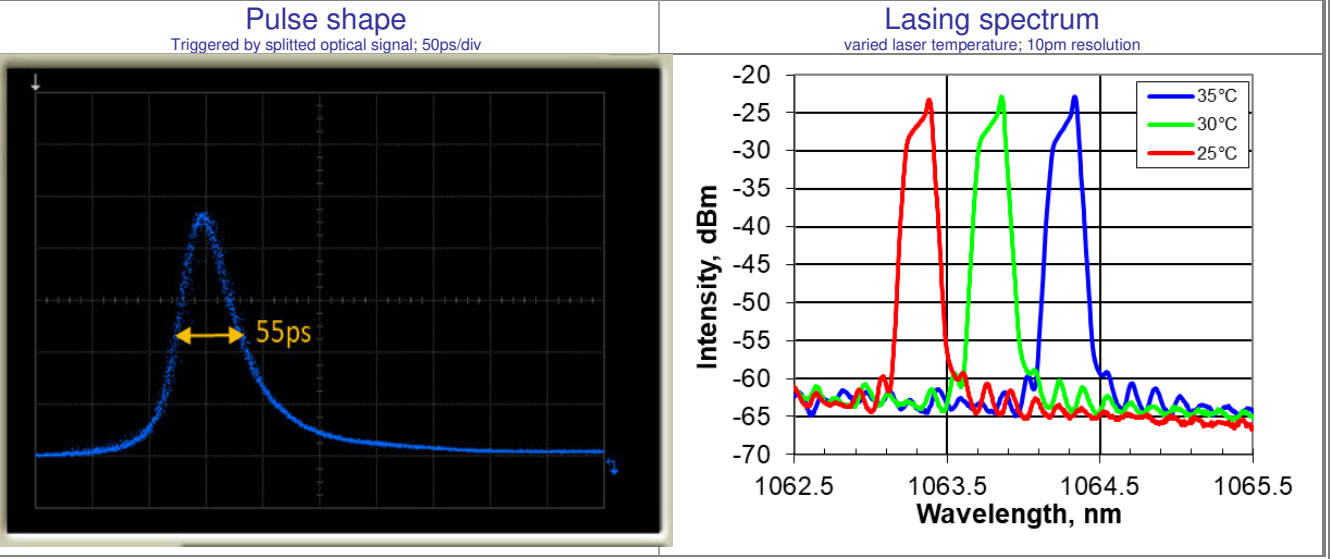
* - depends on laser diode characteristics

CONNECTIONS	
Power and interfaces	10 pin Terminal Block
Trigger	SMA Jack
Synch Out	SMA Jack
USB	MINI-USB, TYPE B

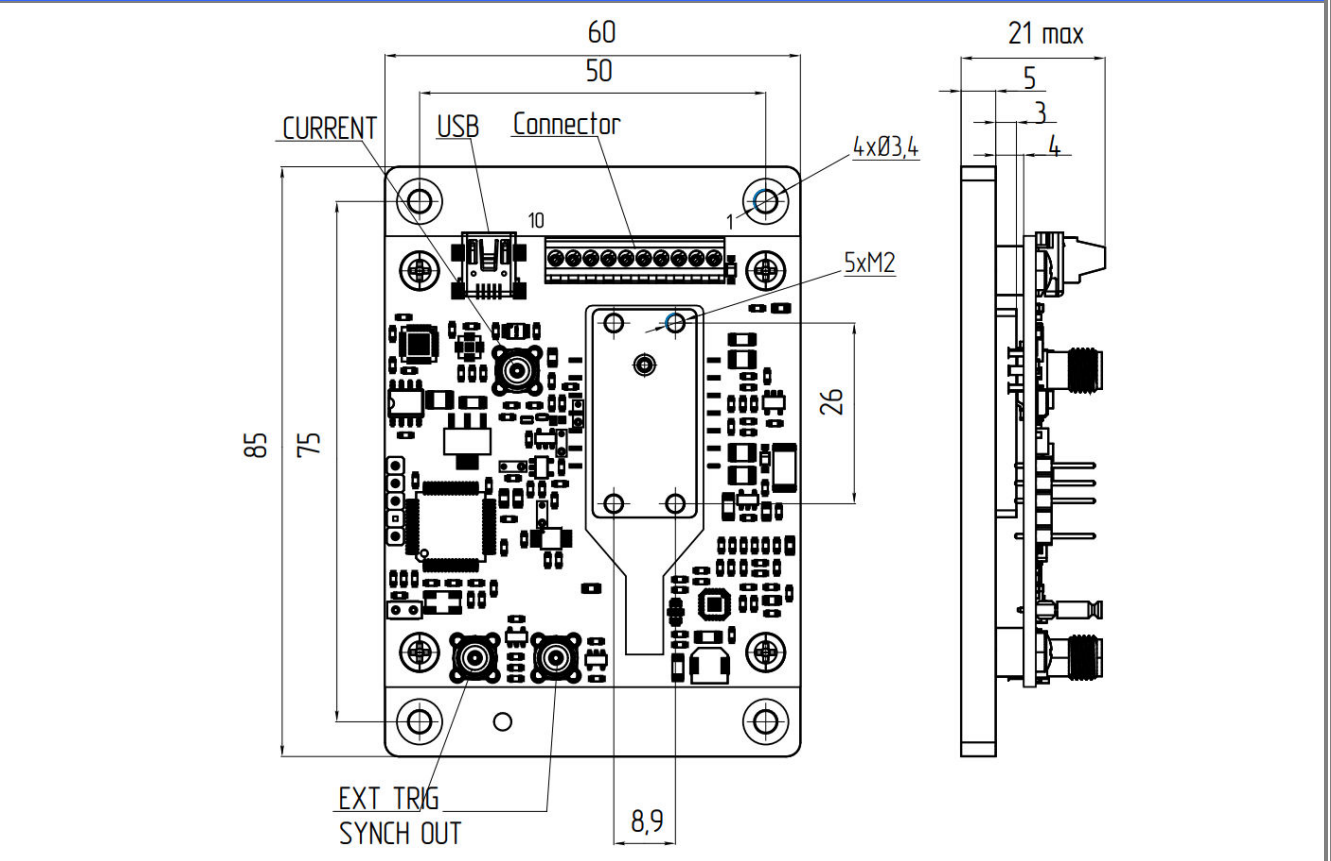
ABSOLUTE MAXIMUM RATINGS			
Parameters	Min.	Max.	Unit
Power supply (voltage)		5.2	V
Trigger in (voltage)		5.2	V
Operating Temperature	+10	+50	°C
Storage Temperature	-20	+70	°C
Humidity, non-condensing		95	%

EXAMPLE PERFORMANCE for reference only

Test conditions: DFB-1064-PM-300-GS laser diode, case temperature 25°C.



DIMENSIONS (All sizes are given in mm)



NOTE: Innolume product specifications are subject to change without notice.