


LDD-14pin-2A-ns

Nanosecond Laser Diode Driver



Features:

- Current range up to 2A
- 1-100 ns pulse duration (FWHM)
- On-board TEC controller
- USB, RS-232, CAN, UART interfaces
- LabView compatible

Application:

- Fiber Laser seeding
- Laser driver for RnD labs

Specification

DATE: 02 February 2023

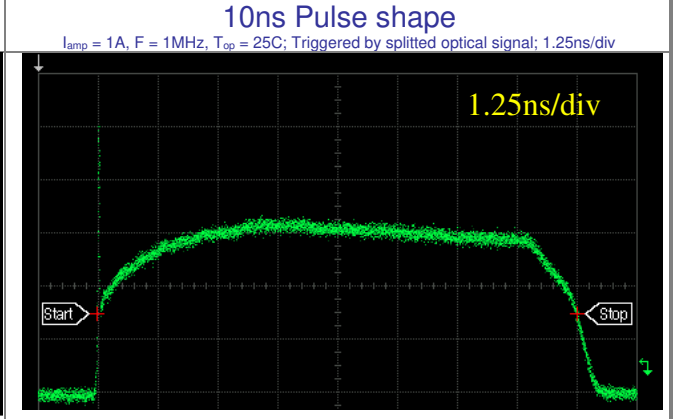
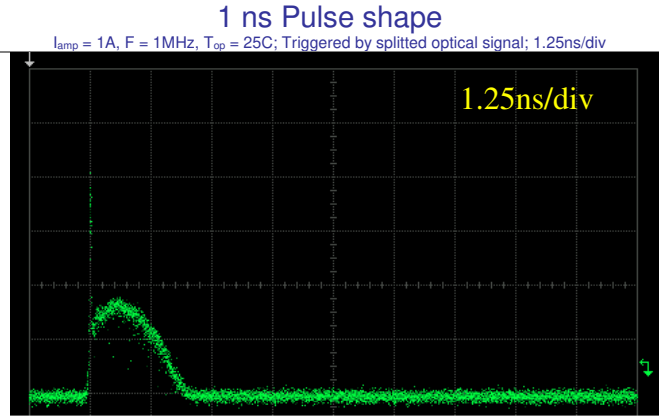
SPECIFICATIONS					
Parameters	Symb.	Min.	Typ.	Max.	Unit
Pulse current amplitude	I_{amp}	0		2	A
Compliance voltage	V_c			3	V
Pulse repetition rate	F	single shot		10	MHz
Pulse width (FWHM)*	τ	1		100	ns
Pulse width accuracy setting	T_{step}		0.2		ns
Trigger in (50 Ohm impedance)	V_{in}	3.3		5	V
Chip temperature	T_{op}	15	25	45	°C
Consumption power (Voltage)	V	4.8	5	5.2	V
Consumption power (Current)	I			2	A
Dimensions		60x85x21			mm

* - depends on laser diode characteristics

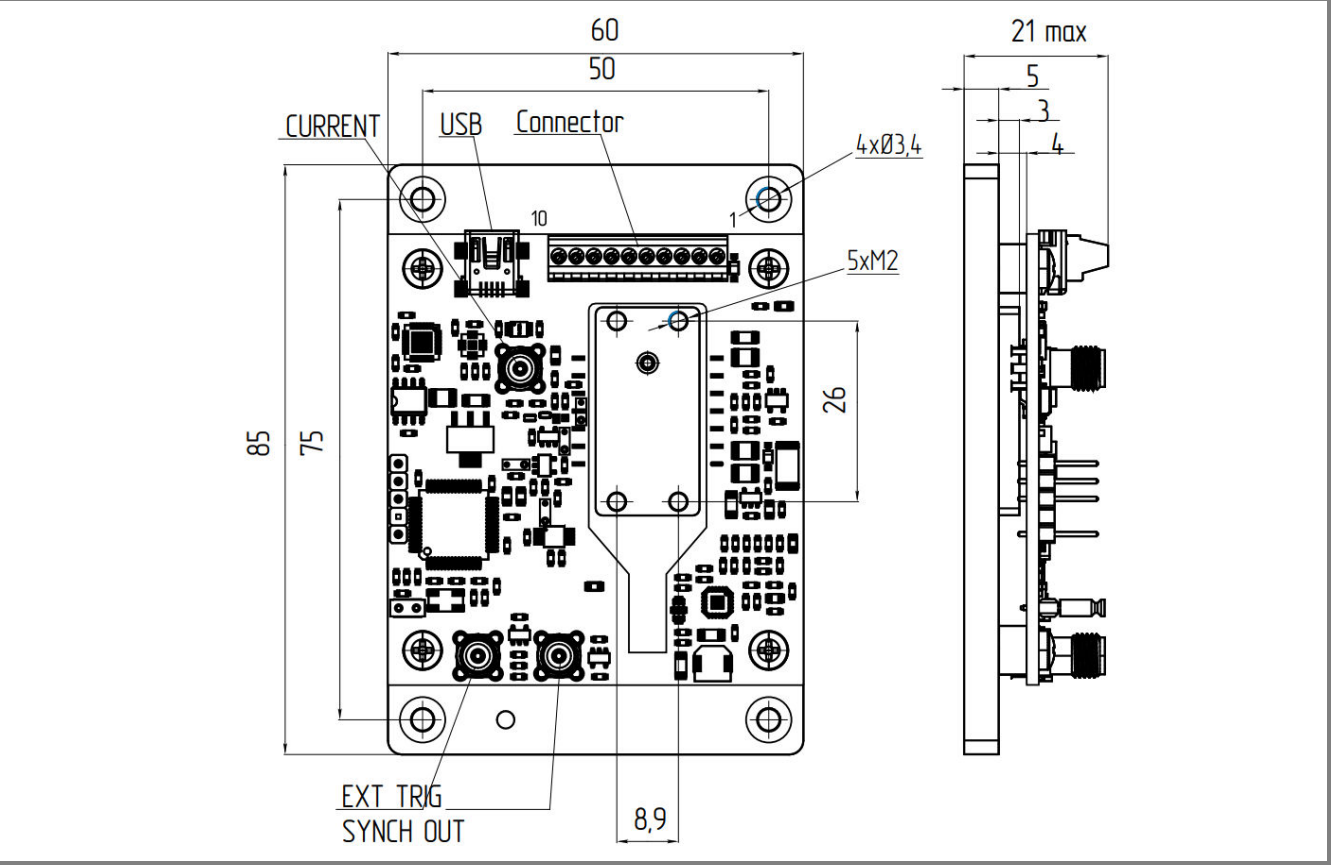
CONNECTIONS	
Power and interfaces	10 pin Terminal Block
Trigger	SMA Jack
Current Pulse Monitor	SMA Jack
Synch Out	SMA Jack
USB	MINI-USB, TYPE B

ABSOLUTE MAXIMUM RATINGS			
Parameters	Min.	Max.	Unit
Power supply (voltage)		5.2	V
Trigger in (voltage)		5.2	V
Operating Temperature	+10	+50	°C
Storage Temperature	-20	+70	°C
Humidity, non-condensing		95	%

TYPICAL PERFORMANCE for reference only
 Test conditions: LD-1064-PM-300 laser diode, case temperature 25°C.



DIMENSIONS (All sizes are given in mm)



NOTE: Innolume product specifications are subject to change without notice.